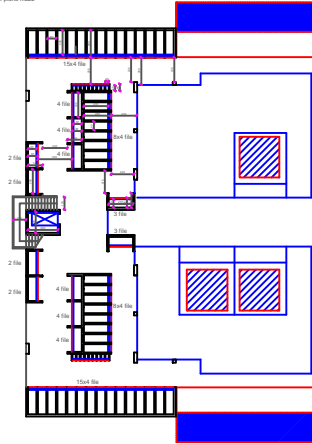




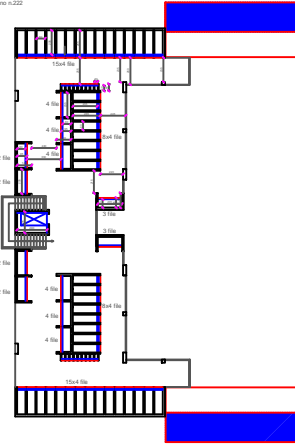
PIANTA PIANO TERRA  
scala 1.200

locali di piano n.222



PIANTA PIANO PRIMO  
scala 1.200

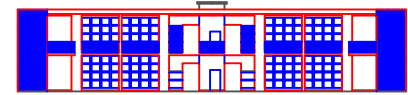
locali di piano n.222



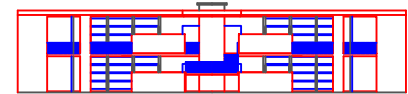
SEZIONE  
scala 1.100



PROSPETTO SUD-EST  
scala 1.200



PROSPETTO NORD-OVEST  
scala 1.200



PLANIMETRIA GENERALE  
scala 1.500

1°STRALCIO FUNZIONALE

2°STRALCIO FUNZIONALE

